

# DIGITAL PRINTING

# Guidelines

## Live Artwork

Preferred Format: ART- Illustrator or PDF, CAD - ARTIOS (.ard)

Art must be centered to dieline and at actual size.

## Pictures and Links

A resolution of at least 300 dpi recommended (at final size).

## Bleed

Bleed should be 1/4" on all sides.

Logos and text must be placed at least 3/8" from cuts or scores.

Any art placed directly against scores may bleed onto adjoining panels.

## Fonts

Please embed all fonts in the PDF.

For Live Artwork files, all necessary fonts must be included with the job or converted to outlines.

Fonts as small as 8pt can print legibly (10+ for reverse type)

## PDF Documents

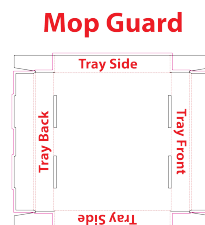
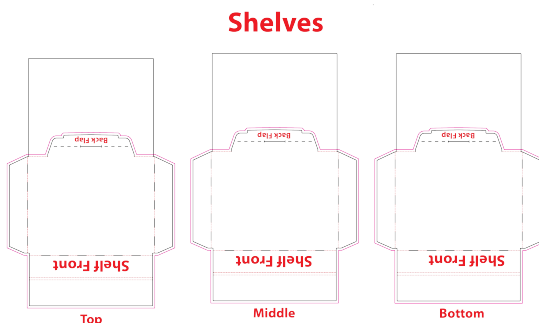
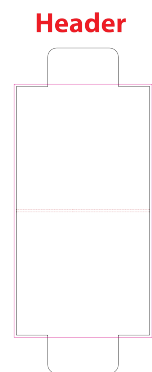
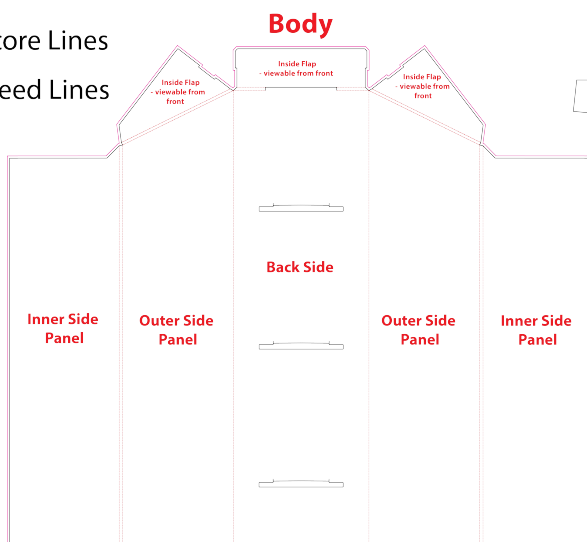
Please use PDF version 1.4 or higher (with transparencies) when directly exporting from Illustrator, Indesign or ArtPro. Embed all fonts and select the press quality option.

## Overprint Settings

Check your file for correct overprint settings - white objects set to overprint are not visible when printed!

If your file contains a dieline, use a spot color for it and set it to overprint.

- Cut Lines
- - - Score Lines
- Bleed Lines



Example of art clipped to bleed path

